

# ProMusica ARIZONA

THE COMMUNITY CHORALE & ORCHESTRA OF NORTH PHOENIX



*Photo courtesy Azy Scotten Photography*

## Annual Report July 1, 2021 - June 30, 2022



*ProMusica Arizona is supported in part by the Arizona Commission on the Arts, which receives support from the State of Arizona and the National Endowment for the Arts.*

# ProMusica Arizona Chorale and Orchestra

## 2021-2022 Board of Directors

Chair	Malcolm Smith
Vice Chair	Karen Rasmussen
Treasurer	Esmeraldo Silva
Secretary	Trish Wilson
Immediate Past Chair	Jan Sandoz
Directors	Joy Baber Anita Crider Sam Crump Leslie French Francine Leiser Eric Lerner Peni Long Beth Mabee Anne Roberts Meghan Ruel Michele Southerland Horace Williams
Endowment Fund Chair	Lissi Weiss

## Staff

Executive Director	Yvonne Dolby
Artistic Director/Principal Conductor	Patti Graetz
Administrative Assistant	Cheri McGunagle
Concertmaster	Meghan Ruel
Accompanist	Jeffrey Yoder

Mailing Address  
PO Box 74386  
Phoenix, AZ 85087

Website  
[www.pmaz.org](http://www.pmaz.org)

Phone  
(623) 326-5172

Email  
[info@pmaz.org](mailto:info@pmaz.org)

## Table of Contents

Staff	4
Message from the Board Chair	5
Performance Review for the 2021-22 Season	7
Financial Reports for the 2021-22 Season:	
Fiscal Year 2022 Profit & Loss	9
Fiscal Year 2022 Balance Sheet	10
Supporters of the 2021-22 Season	12

*ProMusica Arizona's mission is to enrich lives in the Greater Phoenix area, with focus on the North Valley, through innovative, joint performances of its multigenerational Chorale and Orchestra.*

*As part of its commitment to high-quality musical performances, ProMusica Arizona is dedicated to an inclusive policy of attracting musicians in every age group and providing a challenging but supportive environment to develop talent. Participation offers musicians an educational experience and opportunity to practice with others, perform before a live audience, and receive mentoring and instruction from experienced singers and instrumentalists. ProMusica Arizona provides a performance home for local talent and brings family-friendly live music at affordable ticket prices to audiences of all ages.*

*ProMusica Arizona is a 501(c)(3) nonprofit organization and is a proud member of Chorus America, League of American Orchestras, ASCAP, BMI, Anthem Area Chamber of Commerce, Arizona Citizens for the Arts, and Alliance of Arizona Nonprofits.*

## ProMusica Arizona 2021-22 Staff



*Yvonne Dolby  
Executive Director*



*Patti Graetz  
Artistic Director  
Principal Conductor*



*Meghan Ruel  
Concertmaster*



*Cheri McGunagle  
Administrative Assistant*



*Jeffrey Yoder  
Accompanist*

# Message from the Board Chair

Dear Friends of ProMusica Arizona,

Our 2021-2022 season was a year of continued adjustments to the changes that the COVID pandemic brought into our world and a reemergence of our live performances. With caution, optimism and hope, we journeyed into the season wondering what we could do to take care of ourselves and our supporters. As our staff and volunteers discussed the various risks and attempted to anticipate how and if we would have audiences to perform in front of, our love of music and commitment to bringing live music to the Valley prevailed and we slowly proceeded.

Patti Graetz, our Artistic Director, in her third full year as our Artistic Director/Principal Conductor after being the Interim in 2018-2019, put together a fantastic season of three concerts. In what was personally one of the most emotionally significant concerts I have played in, Patti created the "Let Music Live!" concert which was our first after so many months without music. One of the pieces was a song that talked about a world without music and the impact of music showing up again. It was a perfect illustration of what we had all just gone through and was like an announcement of our triumphant return. Our second concert, "An Arizona Holiday," had a homecoming feeling of sorts as we performed holiday music by local composers and had the honor of having them present in the audience. Our final concert of the season was two plus years in the making. "Misa Azteca" was a concert we were scheduled to perform in 2020, but it got pushed back two years. Having sat in the 2020 rehearsals and then again in the 2022 rehearsals, I recognized that the delay in performing was one of the blessings that came from the pandemic. Although we did not practice those two years, the quality and caliber of our performances improved substantially. We collaborated with the Carolyn Eynon singers to produce a dynamic performance and a perfect ending to our return season.



*Malcolm Smith  
Board Chair*

There were new challenges that presented themselves to us in our 2021-2022 season. We lost one of our performance spaces and had to move back to performing at local high school venues. This change had a significant impact on our budget. We ended up having to pay four times the amount we had been budgeting per concert. Our Board worked to figure out how to adjust to the challenges. This limitation created a strain on the budget that saw no easy solution in site and will require adjustments in our upcoming season. In an effort to look at ways to find a regular place to perform, ProMusica Arizona got involved with a group of people and made a proposal to have a performing arts center in the North Valley. That bid did not pass; however, it did create an awareness of the need for a performing arts complex in the North Valley, and we hope to see one in the very near future.

We had several partnerships including our ongoing relationship with Arizona Christian University, which enabled us to add musicians to our orchestra while at the same time enhancing their pursuit of music degrees.

Despite making it through the financial strain of the pandemic, we were not "out of the woods" this year, and once again, we survived and came out on top through ongoing generous donations by our supporters, sponsors and audience members. Our Executive Director, Yvonne Dolby, did incredible work and found many grants to help us maneuver through the

treacherous waters. With the unknown response to live concerts, we operated on a very conservative budget and came out ahead. Our Champagne Salon was a wonderful success in a beautiful home provided by our host family. The weather was perfect for the occasion, and our volunteers were made up primarily of members of the orchestra and chorale. Our Spring Campaign did not produce the results we hoped, but they are funds that will definitely help us moving into our 20th Anniversary season.

Women in Song had the opportunity to perform as a live ensemble again out in our community. It was another great opportunity to bring live music performances to many who had been waiting.

We have always been a financially sound organization due to the generosity of our donors, sponsors and audiences, and what we created from the pandemic was the ProMusica Arizona Endowment Fund. This fund allows others to make an even more lasting impact by designating a legacy gift to our Endowment Fund which will provide long term financial resources to sustain our high-quality music to others for years to come.

On a personal note, this year has been a year of learning for me as the incoming Board Chair and a season where I have grown more proud of being a musician with ProMusica Arizona. Having been in the orchestra and performing for so many years, I really had no idea how many things go on behind the scenes that make up the life force of our non-profit organization. The heart and passion of our volunteers, the generosity of our supporters, the dedication and integrity of our Board of Directors, the commitment from our musicians and exceptional quality of our small but mighty staff have moved me and made me more proud to be part of this organization than ever before. I am excited for our 20th Anniversary season and look forward to all of the wonderful musical experiences and ways to acknowledge our 20th year that are being planned.

Thank you all again for your support through these very challenging last few years, for your attendance at our concerts and for your ongoing financial support and for continuing to spread the word so that more people may become part of our ProMusica Arizona family as musicians, supporters, concert attendees and more. I wish you all a wonderful summer and look forward to celebrating, performing and making new memories with you.

In humble gratitude,

Malcolm Smith  
Board Chair



# Performance Review for 2021-22Season

(attendance figures in parentheses)

October 16-17, 2021 PMAZ Chorale & Orchestra performed *Let Music Live!* as a celebration of music and the return to in-person performances. A performance was held at Boulder Creek Performing Arts Center in Anthem on October 16 and American Lutheran Church in Sun City on October 17. (352)

November 11, 2021 PMAZ singers and instrumentalists performed patriotic music at the 10<sup>th</sup> Anniversary Ceremony of the Anthem Veterans Memorial. (5,000)

December 4-5, 2021 PMAZ Chorale & Orchestra in collaboration with the Arizona Christian University Firestorm Chorale performed *An Arizona Holiday* featuring Arizona composers. A performance was held at Barry Goldwater Performing Arts Center in North Phoenix on December 4 and American Lutheran Church in Sun City on December 5. (564)

December 7, 2021 Women in Song performed holiday music at Arrowhead Valley Retirement in Peoria. (40)

December 11, 2021 Women in Song performed holiday music at Orchard Pointe at Terrazza in Peoria. (40)

December 11, 2021 Women in Song performed holiday music at the Chamber of Commerce Winter Gala in Anthem. (275)

December 13, 2021 Women in Song performed holiday music at the Glendale Library in Glendale. (50)

December 16, 2021 Women in Song performed holiday music at Montecito Senior Retirement in Peoria. (50)

December 17, 2021 Women in Song performed holiday music at Glencroft Senior Living in Glendale. (100)

March 12, 2022 Women in Song performed at Casa del Rio Retirement Community in Peoria. (25)

March 19, 2022 PMAZ soloists and small ensembles performed for a Musical Champagne Salon in a private home in the Anthem Country Club. The event included food, wine, champagne, and entertainment. (95)

April 2-3, 2022 PMAZ Chorale & Orchestra in collaboration with the Carolyn Eynon Singers performed *Misa Azteca* featuring choir, orchestra, soloists, and Aztec percussion. A performance was held at Barry Goldwater Performing Arts Center in North Phoenix on April 2 and American Lutheran Church in Sun City on April 3. Dancers from the Ollin Yoliztli Dance Academy performed before the concert. (554)

April 5, 2022 Women in Song performed at Sierra Winds Retirement Community in Peoria. (50)

April 9, 2022 Women in Song performed at Pacifica Senior Living in Peoria. (20)







*Women in Song and accompanist Jeffrey Yoder at Orchard Pointe at Terrazza in Peoria*



*Mexican dancers at the Misa Azteca concert*



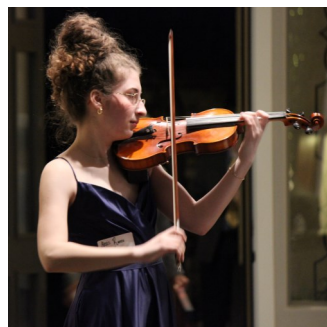
*ProMusica Arizona Orchestra members*



*ProMusica Arizona Chorale members*



*ProMusica Arizona Conductor, Patti Graetz*



*Musical Champagne Salon  
in Anthem Country Club*





# ProMusica Arizona

## PROFIT AND LOSS July 2021- June 2022

### Income

Contributed Revenue	171,406.70	82%
Earned Revenues	35,058.20	17%
Other Revenues	2,705.67	1%
<b>Total Income</b>	<b>\$ 209,170.57</b>	<b>100%</b>
<b>Gross Profit</b>	<b>\$ 209,170.57</b>	

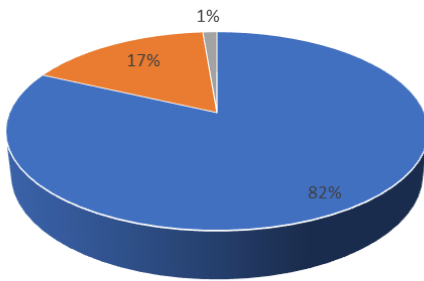
### Expenses

Artistic Expenses	65,890.00	41%
Production/Operation Expenses	20,210.65	12%
Marketing Expenses	12,516.06	8%
Development/Fundraising Expense	6,628.84	4%
Box Office Expense	2,322.64	1%
Administrative Expenses	55,102.61	34%
<b>Total Expenses</b>	<b>\$ 162,670.80</b>	<b>100%</b>
<b>Net Operating Income</b>	<b>\$ 46,499.77</b>	

### Other Income

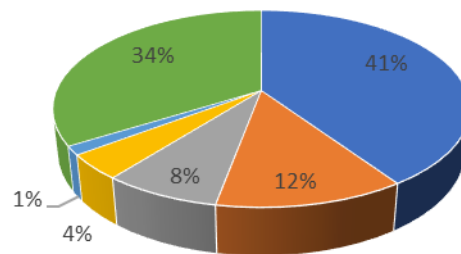
Gain on Sale of Assets	2,243.00	
<b>Total Other Income</b>	<b>\$ 2,243.00</b>	
<b>Net Other Income</b>	<b>\$ 2,243.00</b>	
<b>Net Income</b>	<b>\$ 48,742.77</b>	

Revenue



■ Contributed Revenue ■ Earned Revenues ■ Other Revenues

Expenses



■ Artistic Expenses ■ Production/Operation Expenses  
 ■ Marketing Expenses ■ Development/Fundraising Expense  
 ■ Box Office Expense ■ Administrative Expenses

# ProMusica Arizona

## BALANCE SHEET

June 30, 2022

### ASSETS

#### Current Assets

##### Bank Accounts

Cash Boxes	108.54
MidFirst Checking	44,758.54
MidFirst Savings	71,007.05
Charles Schwab Brokerage Acct	3,214.71
Endowment Reserve Account - 8017	290.04
Endowment Funds Account - 6766	1,480.07

**Total Bank Accounts** **\$ 120,858.95**

##### Other Current Assets

Restricted Accounts	-897.98
Loan Payable - COVID 19	-35.65
Prepaid Expenses	3,521.43

**Total Other Current Assets** **\$ 2,587.80**

**Total Current Assets** **\$ 123,446.75**

#### Fixed Assets

Orchestra Furniture & Fixtures	3,848.32
Electronic & Sound Equipment	10,753.52
Music Library	60,405.81
Music Folders	3,990.06
Musical Instruments	12,137.80
Chorale Furniture & Fixtures	21,969.18
Office Equipment	2,260.42
Other Equipment	1,696.76
Accumulated Depreciation	-99,746.00

**Total Fixed Assets** **\$ 17,315.87**

**TOTAL ASSETS** **\$ 140,762.62**

(Continued on next page)

**ProMusica Arizona**  
**BALANCE SHEET CONTINUED**  
June 30, 2022

**LIABILITIES AND EQUITY**

**Liabilities**

**Current Liabilities**

**Credit Cards**

VISA Credit Card	757.03
------------------	--------

Total Credit Cards	\$ 757.03
--------------------	-----------

**Other Current Liabilities**

Payroll Liabilities	3,782.13
---------------------	----------

Total Other Current Liabilities	\$ 3,782.13
---------------------------------	-------------

Total Current Liabilities	\$ 4,539.16
---------------------------	-------------

**Long-Term Liabilities**

Refundable Deposits Payable	39,681.88
-----------------------------	-----------

Total Long-Term Liabilities	\$ 39,681.88
-----------------------------	--------------

Total Liabilities	\$ 44,221.04
-------------------	--------------

**Equity**

Retained Earnings	47,798.81
-------------------	-----------

Net Income	48,742.77
------------	-----------

Total Equity	\$ 96,541.58
--------------	--------------

TOTAL LIABILITIES AND EQUITY	\$ 140,762.62
------------------------------	---------------

## Supporters of the 2021-22 Season

### Individual Donors

Marge Aman	Betty & Dan Gregoria	Karen Rasmussen
Anonymous	Jacqueline Grela	Brett Reed
Deborah Austin	Rebecca Griffiths, BS, DMD	Pat Rettberg
Robert & Joy Baber	Lee & Carla Gunter	Anne & Fay Roberts
Stephanie Ball	Vicki Powers & Roger Gustafson	Elaine & Stanley Rose
Rachel Barrett	Marilyn Hallihan	Bradley & Carol Routh
Gloria Becker-Rial	Ann Hamlin	Jan & John Sandoz
Peter Bente	Dennis Haugan	Lawrence & Cynthia Schiffman
Kimberly Blumberg	Mahlon Hawk	Robert & Sylvia Schmidt
Amanda Boehm	Jim Henderson	John & Glenda Schwalbach
Jim & Leigh Bradburn	Connie & Robert Henry	Susan Sendrow
Jane Brambilla	Virginia Hensen	Esmeraldo & Ligia Silva
Linda & Wayne Brinkmeyer	Denise Hickey	Ena Simanson
Judi & Paul Buff	Marie Huber	Malcolm Smith & Mary Serke
Holly Butler	Mary Jaster	Michele Southerland
Craig & Lynn Caldwell	Sarah King	Katherine Stevenson
Cheryl Hall Cassady	Patricia & Willie Knaus	Rachel Stoddard
David Cesal	Sharon Kolba	Jennifer Tasche
Clark Chaffee	Donna & Stan Kublin	Gabrielle Thomas
Bill Chartrand & Terry Froyd	Susan Lagg-May	Ms. Brinley Thomas
Connie Clark	Jolynn Lee	Nancy Thornton
Deborah Combs	Timothy Legere	Nancie Tobison
Anita Crider	Eric Lerner	David Toon
Jan Cross	Peni & Roger Long	Louis Urwitz
Jayne Crupi	Beth Mabee	Robert Vaage & Cynthia Thomas
Jene Dees	Philip Mancusi-Ungaro	Dave & Ro Vaselaar
Anne & Basil Damos	Marianne & Kent Marcek	Corina Veatch
Yvonne & Steve Dolby	Pat & Bill Marrs	Bruce & Suzi Wall
Therese Dotson	Nancy Ann & Lee Martin	Rosie & David Weinstein
Mike & Jill Duckett	Sue & Kelly Mayfield	Lissi & Doug Weiss
Nancy Edenfield	Ruth McBride	Susan & Scott Walker
Jerry & Marva Fife	Pete Mellas	Jo Anne Whitbeck
Darrel Fiske	Ramón Miranda	Kathy & Horace Williams
Dr. Shirley Fiske	Betty Mooney	Jennifer Wilson
Tomas Francis	Kay Newman	Jacob Wilson
Leslie French	Jennifer O'Connell	Trish Wilson
Liz Galpin	Elizabeth O'Connor	Tim Wingate
Bob & Ally Geinosky	Kathy O'Connor	Janice Winscot
Susan Giesecke	Robert Omer	Tom & Claire Witt
Susan Goosic	Barbara Patterson	Marilyn & Richard Witt
Patti Graetz	Ann & Richard Perez	Anita Younkinn
	Sharon Price	Lawrence Zohn



## Supporters of the 2021-22 Season Continued

### **Corporate, Business, Government, and Foundation Donors**

Amazon Smile  
Andrew Z Diamonds & Fine Jewelry  
Anthem Law LLC  
Anthem Rotary Foundation  
Arizona Commission on the Arts  
Black Canyon Heritage Park  
Blue Wire LLC  
City of Glendale  
David & Sue Leach Fund of the Oshkosh Area Community Foundation  
EV P.E.O. Sisterhood  
Harper Physical Therapy  
IllumiLife  
Kroger (Fry's Community Rewards)  
Maricopa County  
Medtronic Foundation  
Small Business Administration  
Tetsell Team at Realty Executives  
The Maestro's Work Foundation

### **In-Kind Contributions**

Azy Scotten Photography  
Total Wine & More  
Whitman & Jackson